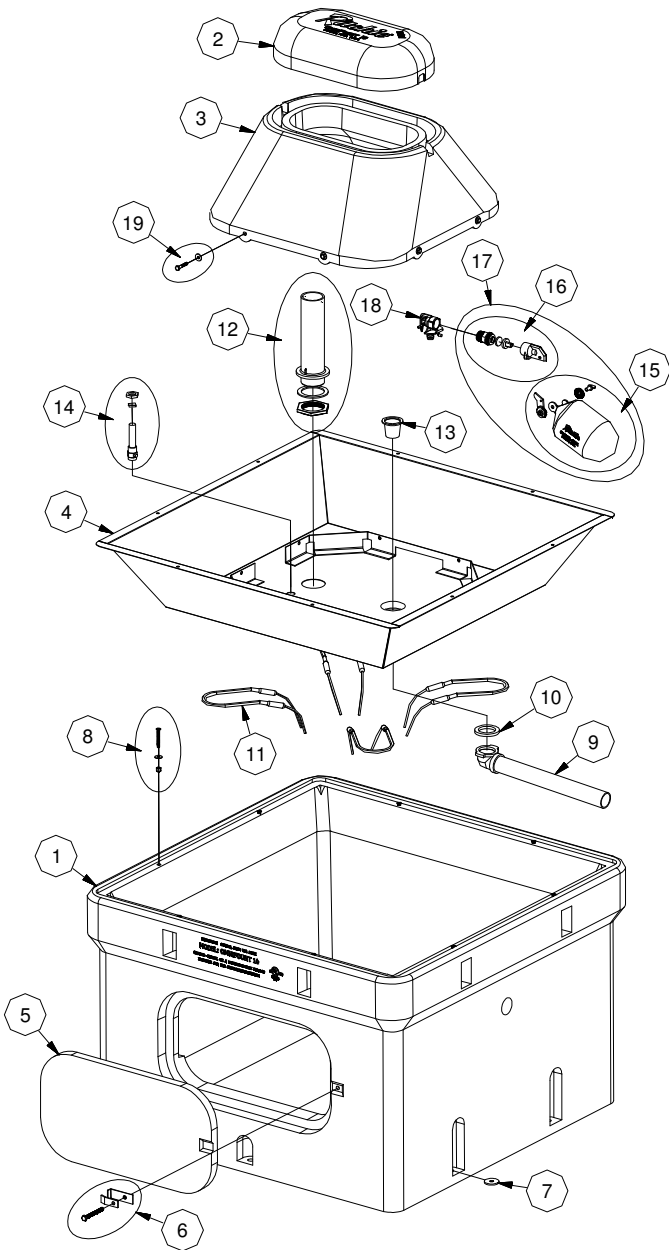


OmniFount 10

Part # 18460



Item	Part #	Description	Qty
1	18466	Casing Omni 10	1
2	18462	Cover Omni 10	1
3	18464	Frame Omni 10	1
4	18469	Trough SS Omni 10	1 Pkg.
5	16562	Access Panel 10" x 20" Poly	1
6	18147	Access Panel Hardware Pkg.	1 Pkg.
7	18318	Bolt Down Washer (4/Pkg.)	2 Pkg.
8	18095	Trough Screw & Nut SS Pkg.	4 Pkg.
9	11473	Drain Pipe w/ Elbow	1
10	18075	Drain Washer (6/Pkg.)	1 Pkg.
11	11419	Heater 250W 120V (1/Pkg.)	4 Pkg.
12	16629	Standpipe w/ Washer & Nut Pkg.	1 Pkg.
13	11480	Drain Plug	1
14	16534	Fenwal Thermostat SS Pkg.	1 Pkg.
	18320	O-Ring Fenwal (6/Pkg.)	1 Pkg.
	18074	Nut Fenwal (6/Pkg.)	1 Pkg.
15	18314	Float w/ Hardware Pkg.	1 Pkg.
	18313	Hardware for Float Pkg.	1 Pkg.
16	15377	Cattle Valve Green Male 3/4" Pkg.	1 Pkg.
17	16993	Valve & Float Pkg.	1 Pkg.
18	11514	Cattle Valve Bracket 3/4" Pkg.	1 Pkg.
19	18471	Bolt&Wshr1/4" x1-1/2" SS (4/Pkg.)	1 Pkg.
NS	12583	Cattle Valve Supply Line Pkg.	1 Pkg.
NS	13830	Cable Heater 48W 120V (1/Pkg.)	1 Pkg.
NS	16554	Accessory Pkg.	1 Pkg.
For 240 Volt Omni 10 #18461, See Parts Below			
NS	16424	Cable Heater 48W 240V (1/Pkg.)	1 Pkg.
NS	11403	Heater 300W 240V (1/Pkg.)	4 Pkg.

NS = Not Shown

Italicized text = Not included or optional configuration add-ons