

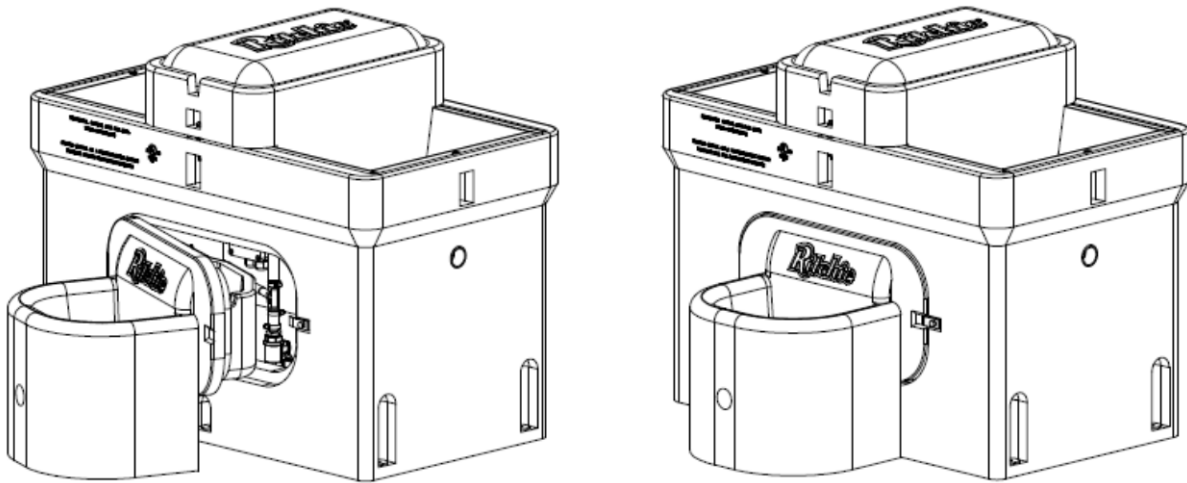
Installation Instructions for



Omni Combination Conversion

Congratulations, you have just purchased the finest watering fountain on the market. This unit is built to give you excellent service when properly installed and maintained. Please follow instructions carefully. Read and understand all instructions before installing

Omni Combination Conversion Installation Instructions



- A. Location** – The Omni Combination Conversion can be use with the Ritchie Industries, Inc. Omni 5 or Omni 10 Livestock Fountain. This requires 14” of clearance on the access panel side of the fountain. This unit will be used in place of the insulated access panel to provide additional drinking for animals. Putting the fountain in a location that offers protection from the wind will enhance the performance of the unit.
- B. Electrical Connection** – In many areas, supplemental heat is required, it is easiest to run the electrical line at the same time you lay the waterline for your fountain. Electrical connections should be installed under the unit. **Any electrical service must be installed and maintained by a qualified electrician.**
- C. Mounting Platform** – A concrete platform must be available on the access panel side the unit that is to be used for supporting the conversion. It should be at least 4” thick and a minimum of 12” wide to accommodate fountain.
- D. Hose Connection** – Connect hose onto the barb fitting of the valve assembly. Attached other end of hose to small barb of adapter tee fitting. **DO NOT CUT SMALL HOSE. AN EXTRA LOOP IS REQUIRED FOR ACCESSING UNDER THE UNIT.** Cut existing 5/8” supply hose approximately 14” above grade. Slip hose onto the large barb ends of the adapter tee fitting. Clamps are furnished to secure the connection.
- E. Drain Plug** – The pre-assembled drain plug should go on the lower hole on the side-wall of the unit. Install the drain plug from inside of trough. Wetting the plug can aid in proper installation. **NOTE:** To drain the unit, you can push the plug from outside of the unit in to the center of the unit, instead of reaching into the water to pull the plug out. After the fountain drains, then reach in to retrieve the plug and install it from the inside.
- F. Float Adjustment** – Turn on the water supply, check for and correct any leaks, and adjust float levels. The water level should be approximately 2” below the trough rim.

G. **Installation** – Place the unit in the access panel opening in the casing of the OMNI 5/10 and secure using the existing access panel latching hardware.

H. **Supplemental Heat** –Immersion heaters are available for cold weather climates. The 250-watt heater #16311 is recommended for the Omni Combination Conversion. Immersion heaters should be placed flat on the bottom of the valve chamber. Ensure that the placement of the heater and its power cable do not interfere with the motion of the float assembly.

Valves

Ritchie valves come in two sizes and three pressure ratings as shown below. Although different pressure rated valves may be used in a fountain, each fountain will only accommodate one size and configuration of valve.

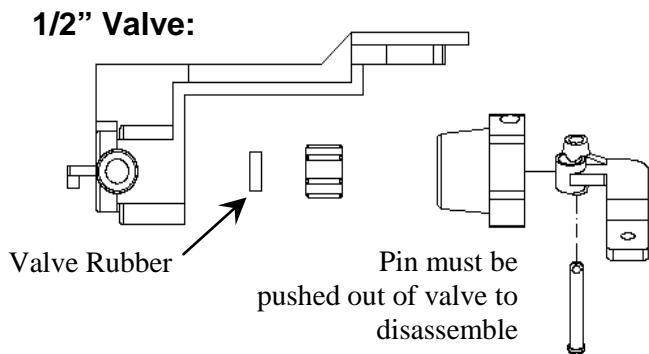
The Omni Combination Conversion uses the 1/2" valve. A red valve is standard. This valve accommodates most common operating pressures, and provides more than adequate water flow rates for the number of animals that could be drinking at any one time from these troughs.

If water pressure is very high and if the valve does not shut off, a pressure-reducing valve may be needed. Your individual situations may require a change from the standard valve supplied with your fountain.

1/2"	Part #	GPM	Pressure Range
White	12574	4.8	Low, 5-40 psi
Red	12575	3.4	Moderate, 40-60 psi
Green	13597	1.45	High, 60-80 psi

Trouble Shooting

Problem	Solution
Valve won't stop dripping	a) Check float adjustment. Ensure float moves freely.
	b) Disassemble valve and check for sand or scale in valve rubber
	c) Turn valve rubber over and re-assemble. See below.
	d) Check for excessive water system pressure.
Low Water Flow	a) Check that valve inlet is not plugged or supply hose is not kinked.
	b) Check system pressure from supply hose by installing a tee and pressure gauge in front of the valve to check pressure drop when valve is open. A severe pressure drop indicates a restriction or undersized supply system.
	c) Check that shut off valves are fully open.



Ritchie Limited Warranty

Effective September 2012

Ritchie Industries, Inc. warrants its products to be free of defective materials and workmanship. Defective part(s) will be repaired or replaced at the option of Ritchie Industries. **This warranty specifically excludes all labor and shipping charges.**

This warranty does not apply to any appearance items, to any product whose exterior has been damaged or defaced, to any product that has been installed improperly, to any product subjected to misuse, abnormal service or handling, and to any products altered or repaired with other than original equipment or manufacturer's parts.

This warranty gives you specific legal rights, and you may also have other rights which vary from state to state.

All warranty claims must be processed through an Authorized Ritchie Dealer/ Distributor. **Proof of purchase is required. This warranty is not transferable.** The period of warranty begins at original date of purchase as follows:

Poly Units

Base, top and ball closures

10 year limited against manufacturing defect. 100% first five years, then declining 20% per year for the remaining five years.

Stainless Steel Units

Stainless trough and stainless valve chamber frame:

Ten years against manufacturing defect or corrosion. 100% all ten years.

Casing and cover:

10 year limited against manufacturing defect. 100% first year, then declining 10% per year for the remaining nine years.

Component Parts

All component parts, such as floats, valves, heating elements:

One year from the date of purchase against manufacturing defect, 100%.

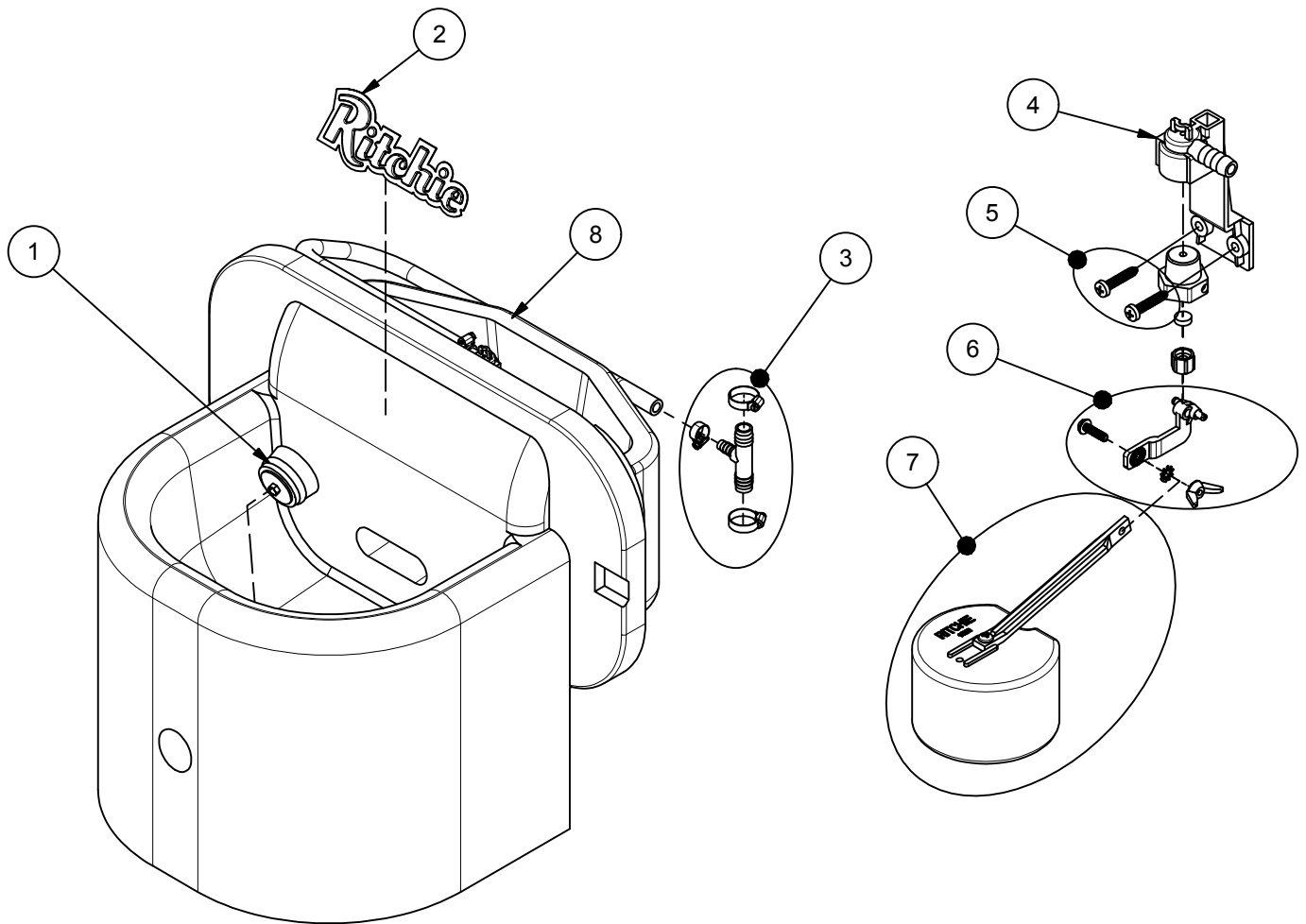
Hydrants

All component parts:

One year from the date of purchase against manufacturing defect, 100%.

Omni Combination Conversion

Part # 18800



Item	Part #	Description	Qty	Item	Part #	Description	Qty
1	18219	Drain Plug #11 pkg	1 pkg	7	12836	Float with Long Arm pkg	1 pkg
2	18655	Ritchie Label 7.5" (1/pkg)	1 pkg	8	18599	Hose 3/8" x 30" pkg	1 pkg
3	18808	Adapter Tee 3/8" x 5/8" HB pkg	1 pkg	NS	15930	Hose Clamp 7/8" SS (5/pkg)	1 pkg
4	11515	Valve Bracket w/ screw pkg	1 pkg	NS	15931	Hose Clamp 1" SS (5/pkg)	1 pkg
5	18709	Screw Valve Mount (4/pkg)	1 pkg	NS	18806	Omni Combo Accessory Pkg	1 pkg
6	12575	Red Valve 1/2" pkg	1 pkg				