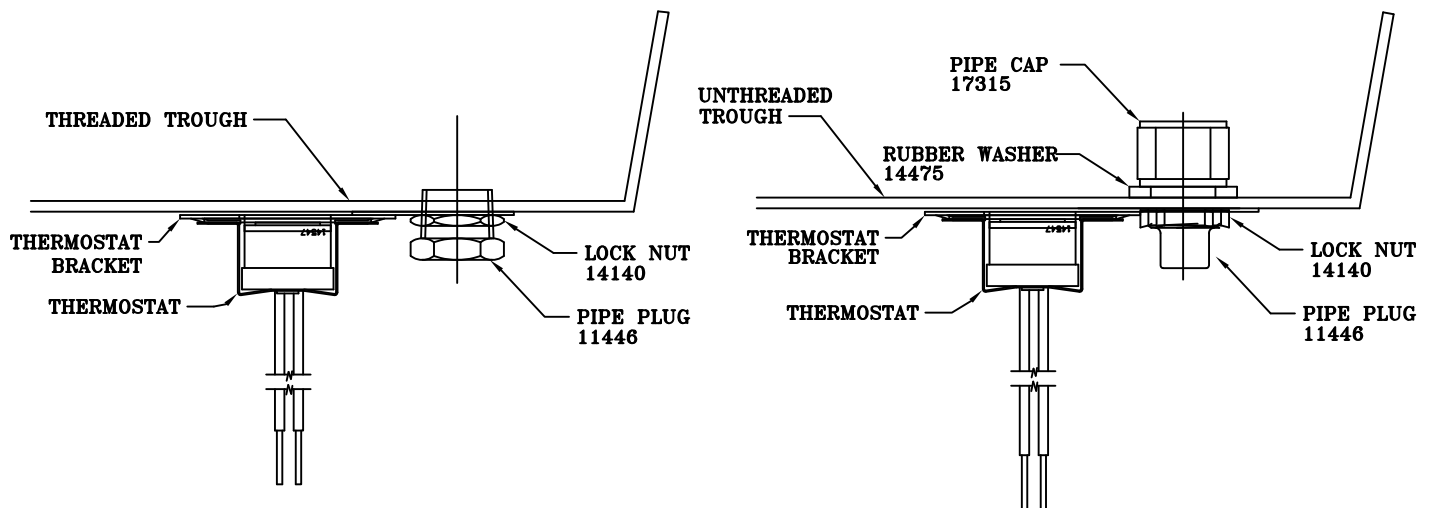


INSTRUCTIONS TO REPLACE ADJUSTABLE THERMOSTAT WITH PRESET THERMOSTAT

ALL ELECTRICAL WORK SHOULD BE PERFORMED BY A QUALIFIED ELECTRICIAN.

1. Disconnect power, turn off water and drain trough.
2. Remove existing thermostat from unit. (NOTE: When disconnecting electrical wiring, Preset thermostat will be wired into the same terminals as the one being removed.)
3. In troughs with threaded thermostat hole, place lock nut on pipe plug, insert plug through thermostat bracket, thread plug into trough and tighten, then tighten lock nut to clamp bracket against trough. Bracket may have to be bent to assure contact with trough. In troughs without a threaded thermostat hole, insert the pipe plug through thermostat bracket into hole in trough. Bracket may have to be bent to assure contact with trough.
4. Place rubber washer over pipe plug and place pipe cap on plug and tighten.
5. Replace drain plug, turn water back on to unit and check for leaks.
6. Wire preset thermostat to the same terminals as the thermostat removed (one lead connected to heaters, the other to the hot supply wire.) turn power back on to unit.



WARRANTY FOR RITCHIE LIVESTOCK FOUNTAINS

Ritchie Industries, Inc. warrants its products to be free of defective materials and workmanship. Defective part(s) will be repaired or replaced, at the option of Ritchie Industries. This warranty specifically excludes all labor and shipping charges.

This warranty does not apply to any appearance items, to any product whose exterior has been damaged or defaced, to any product subjected to misuse, abnormal service or handling, and to any products altered or repaired with other than original equipment or manufacturers parts.

The period of warranty begins at original date of purchase as follows:

PLASTIC UNITS: Ten years on base and top. (100% the first year, declining 10% per year remaining nine years.)

STEEL UNITS: Five years on trough and casing. (100% the first year, declining 20% per year remaining four years.)

STAINLESS STEEL: Ten years on trough and casing. (100% the first year, declining 10% per year remaining nine years.)

All component parts will be warranted for a period of one year from date of purchase.

All warranty claims must be processed through an Authorized Ritchie Dealer.

Ritchies Industries, Inc.
P.O. Box 730/120 South Main /Conrad, Iowa 50621 U. S. A.
641-366-2525 Fax 641-366-2551

13677
10/26/04